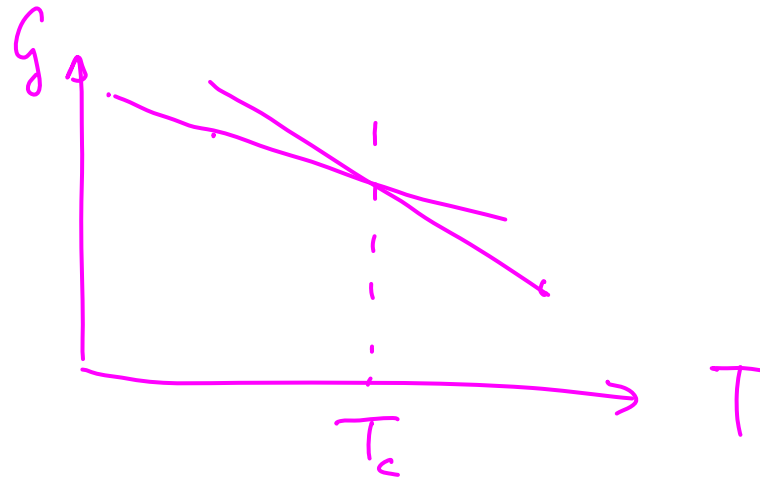
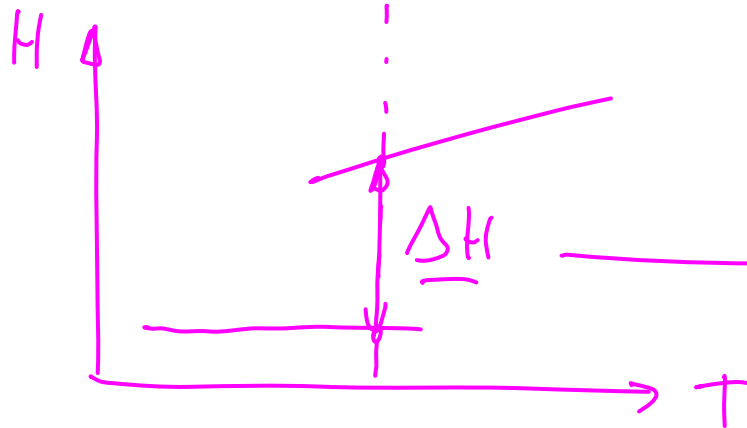


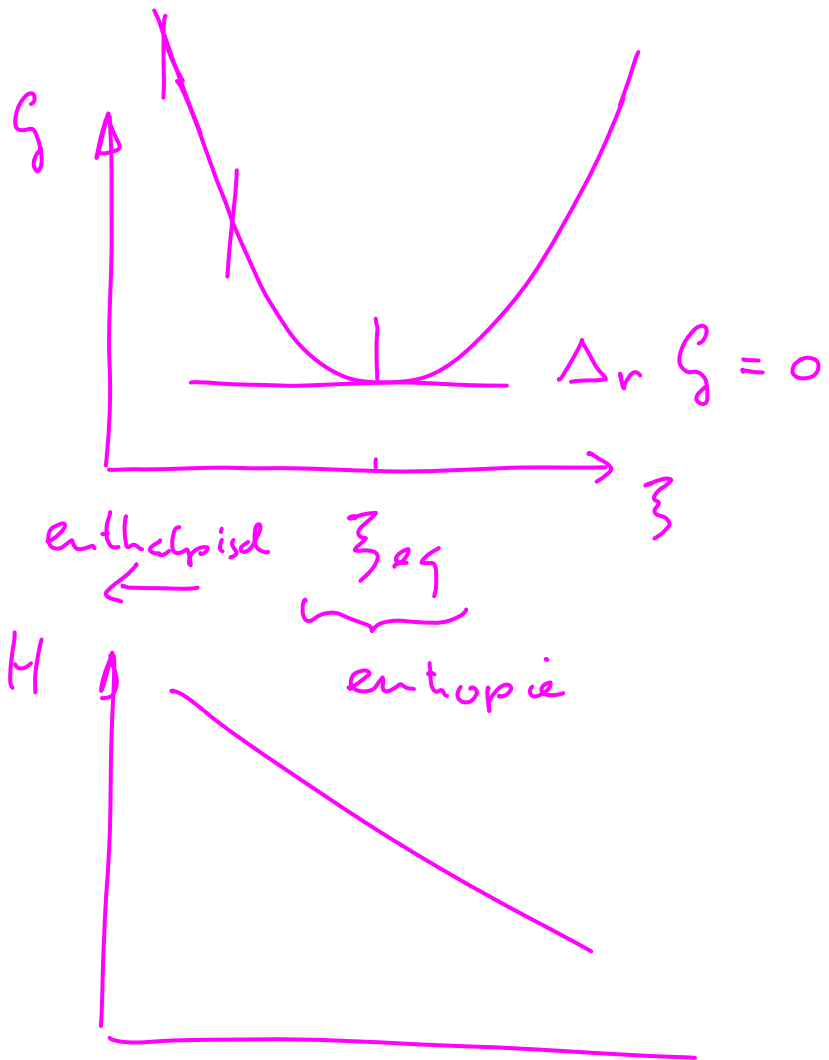
# Herhaling

# Fysische processen



$$\Delta G = 0 = \Delta H - T_c \Delta S$$





- Enthalpische
  - verbranding
  - koelen

}  $\Delta H$  groot

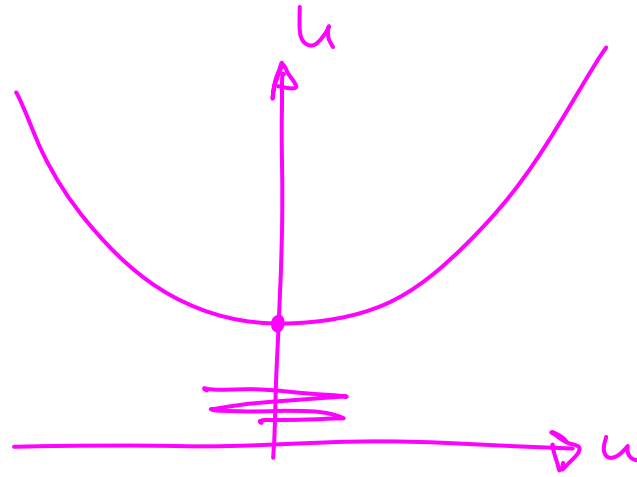
- Entropisch
  - Zuur-base
  - oplossen
  - osmose

}  $\Delta S \approx \Delta H$

- Arbeid
  - $\Delta H$

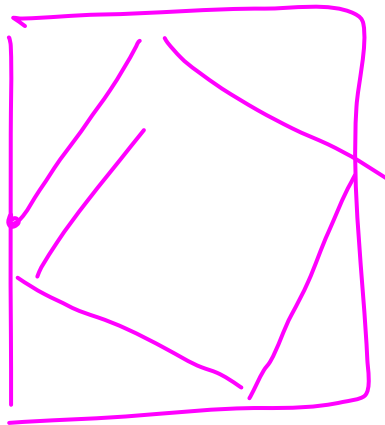
elektrochemische cel

# Mechanica



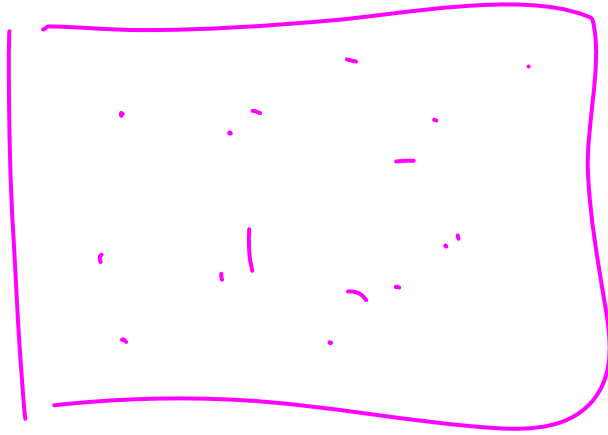
$$U + T = \text{const}$$

Streeven naar min. energie



$$T = \text{const}$$

Neeldeelje synt



2 tendense

$$G = H - TS$$

- min. enthalpy

- max energy spread,







